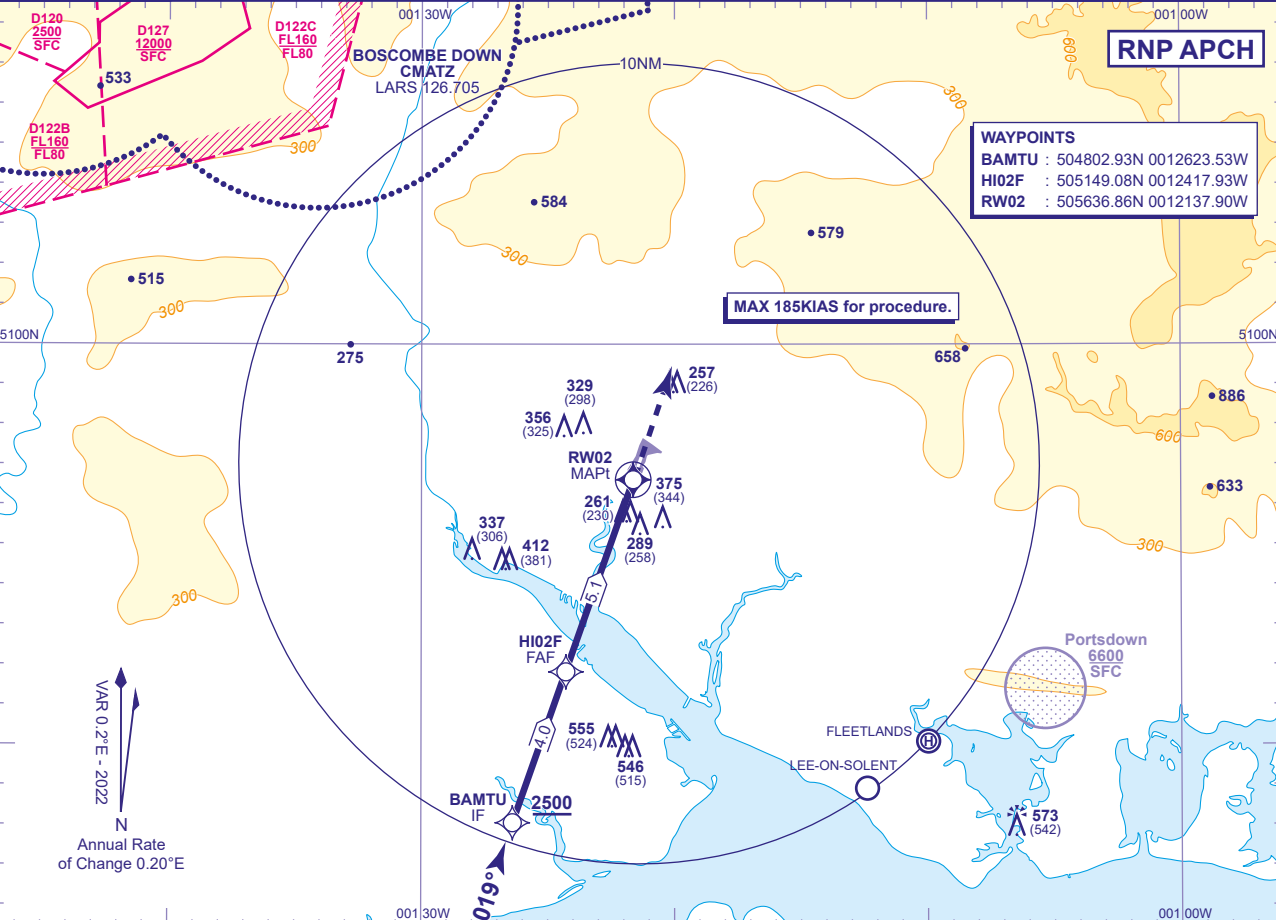


APP	120.230	SOLENT RADAR
	122.730	SOUTHAMPTON RADAR
TWR	118.205	SOUTHAMPTON TOWER
ATIS	130.880	SOUTHAMPTON INFORMATION

AD ELEVATION	44
THR ELEVATION	31
OBSTACLE ELEVATION	648 AMSL (617) (ABOVE THR)
BEARINGS ARE MAGNETIC	

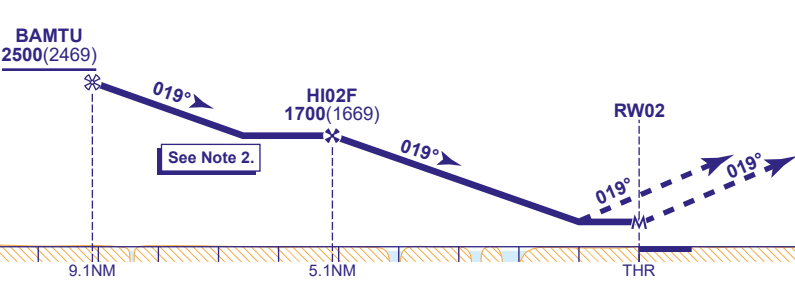
MIN TEMP -10°C
TRANSITION ALTITUDE 6000 (see note 1)



RECOMMENDED PROFILE VNAV VPA 3.0° (LNAV 5.24%), 318FT/NM

NM to RW02	5	4	3	2	1
ALT(HGT)	1670(1639)	1350(1319)	1030(999)	720(689)	400(369)

TCH 50



MAPt (LNAV): RW02
Climb straight ahead to 3000,
or as directed by ATC.

Aircraft Category	A	B	C	Rate of descent	G/S KT	160	140	120	100	80
OCA (OCH)	LNAV/VNAV	510(479)	510(479)		FT/MIN	850	740	640	530	420
	LNAV	530(499)	530(499)							
VM(C)OCA (OCH AAL)	Total Area	680(636)	700(656)	890(846)						

NOTE 1 Outside the Solent CTA notified hours of operation the Transition Altitude is 3000.
2 A 3° vertical profile from BAMTU to the FAF (HI02F) is recommended. An excessive rate of descent may result in leaving controlled airspace.